

CHIDAGA®

#1 in paint accessories



Proudly Canadian
company since 1993

Paint accessories catalog



Brush

- Professional - p.7
- Bristle - p.13
- Economy - p.16
- Set - p.18
- Special Use - p.22
- Artist - p.25



Roller and roller frame

- Microfiber - p.30
- Lint-free - p.32
- Econo - p.34
- Mini-roller - p.36
- Roller frame - p.39
- Applicator - p.42



Tray, liner and set

- Painting set - p.43
- Tray & liner - p.50
- Mini tray - p.52



Extension pole

- Fiberglass - p. 54
- Stainless steel - p.55
- Aluminum - p.55
- Metal - p.56



Caulking gun

- Contractor - p.59
- Skeleton - p.60
- Half cylinder - p.61
- Sausage - p.61



Others

- Mixer - p.62
- Metal brush - p.63
- Scraper - p.64
- Others - p.64

Your basic discount: _____

Your minimum for prepaid transportation: _____

Your representative: _____

Cellular: _____

Terms: Net 30 days
Interest of 2% monthly will be charged on overdue accounts.

Claim: To ensure adequate tracking of merchandise in transit, any insufficiencies/discrepancies in your order and products damaged during transportation must be reported within 48 hours of receipt of your order. It will be difficult for us to trace the packages/carriers after this period and the claim may be refused.

Credit limit: If invoices are not paid (overdue account), Chidaca will cancel the credit limit and orders will be delivered C.O.D. An unpaid overdue account will delay order processing.

Return policy: No returns will be accepted without CHIDACA authorization number. A 20% handling fee will be charged; 25% will be charged for items returned with the customer's labels. The customer is responsible for transportation costs. Goods returned without a CHIDACA authorization number will be returned to the customer at their expense.

Minimum billing: \$100.00 before taxes for merchant-retailers. A fee of \$5.50 will be charged for any order below the minimum required.

Quantity required: Complete box per item for retailers, complete carton for distributors / wholesalers / purchasing groups.

Catalog price: Prices are FOB to the Chidaca warehouse, Brossard, Qc. Prices are subject to change WITHOUT NOTICE.

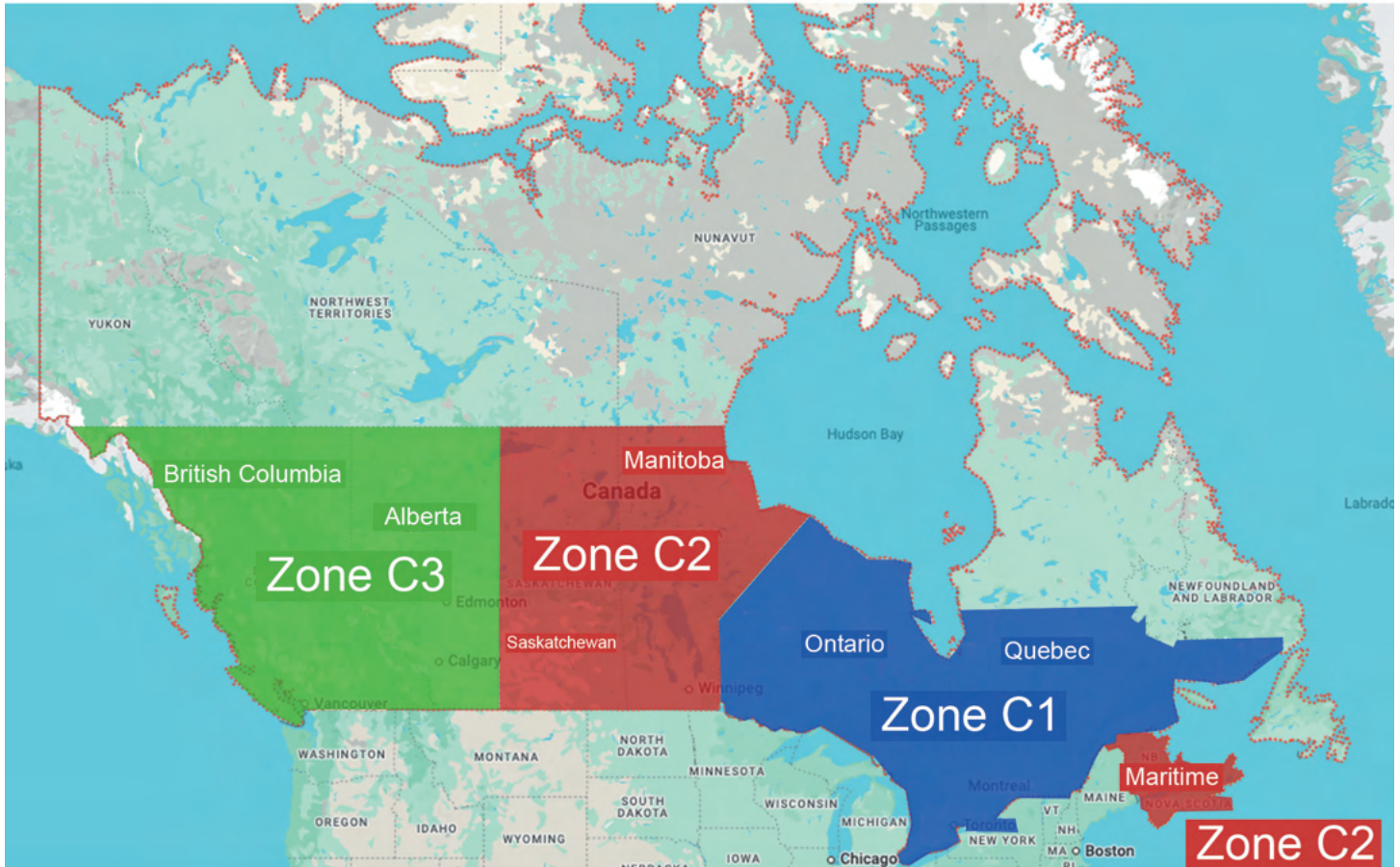
Picking: Customers who come to collect the merchandise must send their order by telephone/fax/email at least 24 hours in advance so that it can be processed.

Guarantee: The warranty only covers original manufacturing defects (transport not included). Defects caused by abnormal use are not guaranteed.

Transportation: Shipping prepaid is only applicable for merchant-retailers (except customers with a special agreement).

Prepaid transportation

Identify your area and refer to the minimum by area below to determine your transportation minimum to have prepaid transportation.



Zone C1: Minimum for prepaid transportation: **500\$**

Zone C2: Minimum for prepaid transportation: **850\$**

Zone C3: Minimum for prepaid transportation: **1500\$**

*Minimum of 6 extension extension poles (models and sizes combined)

**For customers outside of Quebec, contact your representative for more information.

EXCLUSIVE PROGRAM Painting Accessories Selection Guide

**EXCLUSIVE
INNOVATIVE**

Discover our exclusive program which revolutionizes the selection of painting accessories. Thanks to our innovative concept, compare our products easily and quickly to find the perfect tool that will meet your needs.

Fast and simple

Benefits of the program

1

Fast comparison



Quickly compare the features of each accessory, from brushes to rollers, to make informed decisions.

2

Improvement purchases



Improve your customers' purchases with clear and detailed information, allowing them to choose the best products for their projects.

3

Product differentiation



Each product is clearly labeled with its specifics, facilitating differentiation and selection, which increases customer satisfaction.

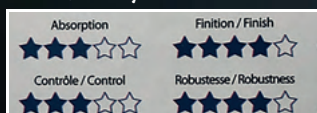
1

Result optimal



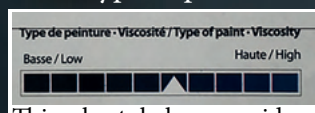
With the paint type and surface type clearly identified, find the best applicator for every stroke.

Quality difference



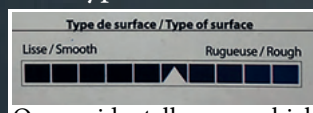
Includes 4 essential criteria such as absorption, control, finish and robustness. Makes it easy to compare quality and choose the one that best suits your needs.

Type of paint



This chart helps you identify which applicator is best suited to the viscosity of the paint you are using. Whether thick or fluid paints, find the perfect tool for optimal application.

Type of surface

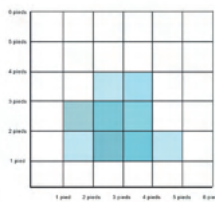


Our guide tells you which applicator is best for different types of surfaces. Whether you're working on wood, metal or plaster, make sure you get a flawless finish using the right tool.



PROFESSIONAL PLANOGRAM SERVICE

We offer professional planogram solutions that optimize your shelf space and increase your sales.



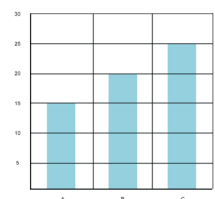
Planogram creation personalized

Our planogram experts work closely with you to design custom solutions adapted to your specific needs.



Efficient and quick installation

Our team guarantees a quick and smooth installation, optimizing your shelves in record time to maximize efficiency and improve the customer experience.



Optimization of sales space

By optimizing the layout of your products, we help you maximize available space and improve your customers shopping experience.



Contact us today for a free consultation and find out how we can improve your sales space.

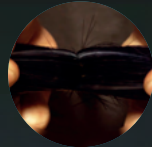
OUR SUPERIOR QUALITY BRUSHES

Discover the difference in quality with our professional brushes. Designed to deliver exceptional performance, our brushes stand out for their innovative design and high-quality materials

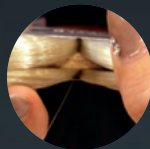
1

High fiber quantity

Our brushes are made with a high fill density, which means they contain a high number of fibers per unit area. This higher density ensures uniform and effortless paint application, allowing surfaces to be covered more efficiently and with fewer streaks. Thanks to this feature, our brushes hold more paint and provide a professional finish with every use.



Chidaca brush



Competition

2

Two small wooden spacers

The small wooden spacers in our brushes create an ideal space for holding paint, without being too large, which maximizes the brush's paint-holding capacity. This design enhances paint retention and reduces the need for frequent refills. Additionally, the wood used for the spacers helps grip the paint more effectively than the plastic spacers commonly found on the market. Using two small spacers instead of a single large one increases the fiber density, forming a double chamber that optimizes paint retention.



3

SRT fibers (Solid, Round, Tapered)

Our SRT fibers are designed to deliver superior performance. SRT fibers are solid, meaning full and not hollow, which ensures better durability and optimal performance with each use. They are round (thus thin at the tip), which allows better paint retention and more precise application.



Chidaca Brush



Competition

4

“Tapered” fibers for precise application

Our brushes feature heated fibers to bend the bristles inward. This unique design allows the tip to fold back on itself when filled with paint, creating a finer tip that prevents paint from leaking out. As a result, you get a more precise paint application and a more uniform tip, minimizing the chance of slippage or bristle separation. This characteristic is particularly advantageous for precision work and careful finishes.

Premium firm

Absorption



Control



Finish



Robustness



Type of paint / viscosity



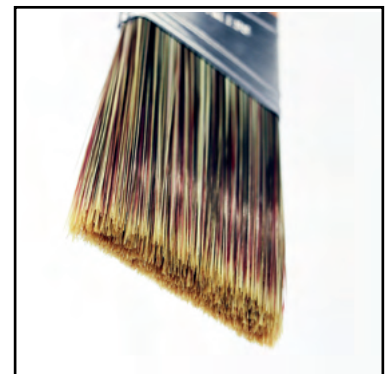
Type of surface



Characteristic

High quality nylon-polyester, stainless steel ferrule, natural wood. Firm filament mix. Ideal for high viscosity paint such as paint and primer. Angular.

Item#	Description	Box	Carton	UPC code
18950	2" (50mm)	12	120	6 89133 18950 1
18963	2-1/2" (63mm)	6	120	6 89133 18963 1





Premium soft

Absorption



Control



Finish



Robustness



Type of paint / viscosity



Type of surface



Characteristic

High quality nylon-polyester, copper-plated stainless ferrule, natural wood. Soft filament mix. Special treatment of the bristles favoring the impregnation of the paint. Ideal for low viscosity paint, exceptional cutting quality. Angular.

Item#	Description	Box	Carton	UPC code
18850	2" (50mm)	12	120	6 89133 18850 4
18863	2-1/2" (63mm)	6	120	6 89133 18863 4
18875	3» (75mm)	6	120	6 89133 18875 7



The 'Contractor' series

Absorption



Control



Finish



Robustness



Type of paint / viscosity



Type of surface



Characteristic

Excellent quality nylon-polyester, stainless steel ferrule, natural wood. Square ferrule, ideal for holding filament straight (plinth, framing, etc.). Flat and Angular.

Item#	Description	Box	Carton	UPC code
Flat :				
16730	1-1/4" (30mm)	12	240	6 89133 16730 1
16750	2" (50mm)	12	240	6 89133 16750 9
16763	2-1/2" (63mm)	6	120	6 89133 16763 9
16775	3" (75mm)	6	120	6 89133 16775 2
Angular :				
17938	1-1/2" (38mm)	12	240	6 89133 17938 0
17950	2" (50mm)	12	240	6 89133 17950 2
17963	2-1/2" (63mm)	6	120	6 89133 17963 2
17975	3" (75mm)	6	120	6 89133 17975 5



The 'short handle'

Absorption



Control



Finish



Robustness



Type of paint / viscosity

Low

High



Type of surface

Smooth

Rough



Characteristic

Excellent quality nylon-polyester, stainless steel ferrule, natural wood. Short handle, ideal for hard-to-reach places, exceptional cutting quality. Angular.

Item#	Description	Box	Carton	UPC code
18650	2" (50mm)	12	120	6 89133 18650 0
18663	2-1/2"(63mm)	12	120	6 89133 18663 0



The 'Entrepreneur' series®

Absorption



Control



Finish



Robustness



Type of paint / viscosity



Low

High

Type of surface



Smooth

Rough

Characteristic

Good quality nylon-polyester, copper-plated steel ferrule, natural wood. Best quality/price, our most versatile brush. Flat and angular.

Item#	Description	Box	Carton	UPC code
Flat :				
16430	1-1/4" (30mm)	12	240	6 89133 16430 8
16450	2" (50mm)	12	240	6 89133 16450 8
16463	2-1/2" (63mm)	12	120	6 89133 16463 8
16475	3" (75mm)	12	120	6 89133 16475 1
Angular :				
16838	1-1/2" (38mm)	12	120	6 89133 16838 4
16850	2" (50mm)	12	120	6 89133 16850 6
16863	2-1/2" (63mm)	12	120	6 89133 16863 6
16875	3" (75mm)	12	120	6 89133 16875 9



The 'Sapphire'

Absorption



Control



Finish



Robustness



Type of paint / viscosity



Type of surface



Characteristic

100% premium polyester, stainless steel ferrule, natural wood. Including Thermoblend technology. Ideal for small jobs without compromising the quality of the finish. Angular.

Item#	Description	Box	Carton	UPC code
15838	1-1/2" (38mm)	12	120	6 89133 15838 5
15850	2" (50mm)	12	120	6 89133 15850 7
15863	2-1/2" (63mm)	12	120	6 89133 15863 7
15875	3" (75mm)	12	120	6 89133 15875 0





The 'Professional'

Absorption



Control



Finish



Robustness



Type of paint / viscosity

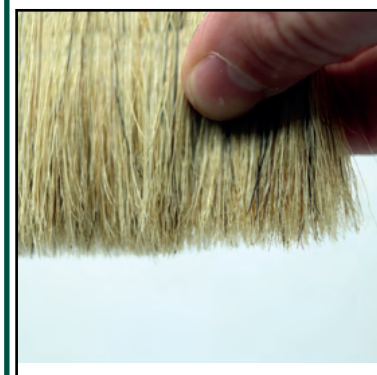


Characteristic

100% premium white bristle, chrome steel ferrule, natural wood. More versatile bristle with great absorption capacity and a superb finish. Angular.

Item#	Description	Box	Carton	UPC code
Angular:				
15515	1-1/2" (38mm)	12	240	6 89133 15515 5
15542	2" (50mm)	12	240	6 89133 15542 1
15525	2-1/2" (63mm)	12	120	6 89133 15525 4
15543	3" (75mm)	12	120	6 89133 15543 8

Oil-based product	Water-based product
<p>Paint</p>	<p>Paint</p>
<p>Stain</p>	<p>Stain</p>
<p>Varnish</p>	<p>Varnish</p>



The 'Essential' series

Absorption



Control



Finish



Robustness



Type of paint / viscosity



Characteristic

Natural bristle and synthetic bristle mixed. Steel ferrule, natural wood handle. This mixture gives more body to the brush and therefore offers better resistance, in addition to being more versatile. Flat and angular.

Item#	Description	Box	Carton	UPC code
Flat:				
15730	1-1/4" (50mm)	12	240	6 89133 15730 2
15750	2" (50mm)	12	240	6 89133 15750 0
15763	2-1/2" (63mm)	12	120	6 89133 15763 0
15775	3" (75mm)	12	120	6 89133 15775 3
Angular:				
15638	1-1/2" (38mm)	12	240	6 89133 15638 1
15650	2" (50mm)	12	240	6 89133 15650 3
15663	2-1/2" (63mm)	12	120	6 89133 15663 3
15675	3" (75mm)	12	120	6 89133 15675 6



Oil-based product	Water-based product
<p>Paint</p>	<p>Paint</p>
<p>Stain</p>	<p>Stain</p>
<p>Varnish</p>	<p>Varnish</p>



The '141' series

Absorption



Control



Finish



Robustness



Type of paint / viscosity



Characteristic

100% white bristle, steel ferrule, plastic handle. Ideal for small jobs without compromising the quality of the finish, also designed for industrial work. Flat.

Item#	Description	Box	Carton	UPC code
14115	3/5" (15mm)	24	480	6 89133 14115 8
14130	1-1/4" (30mm)	24	480	6 89133 14130 1
14150	2" (50mm)	12	240	6 89133 14150 9
14175	3" (75mm)	12	240	6 89133 14175 2
14100	4" (100mm)	12	120	6 89133 14100 4



Oil-based product	Water-based product
<p>Paint</p>	<p>Paint</p>
<p>Stain</p>	<p>Stain</p>
<p>Varnish</p>	<p>Varnish</p>



The 'Professional'

Absorption



Control



Finish



Robustness



Type of paint / viscosity



Type of surface



Characteristic

100% mixed polyester, steel ferrule, natural wood. 2 different types of polyester working together to provide good performance, plus the flagged filament ends ensure a smooth finish. Flat and angular.

Item#	Description	Box	Carton	UPC code
Flat:				
16221	1-1/4" (30mm)	12	240	6 89133 16221 4
16222	2" (50mm)	12	240	6 89133 16222 1
16225	2-1/2" (63mm)	12	120	6 89133 16225 2
16223	3" (75mm)	12	120	6 89133 16223 8
Angular:				
15415	1-1/2" (38mm)	12	240	6 89133 15415 8
15442	2" (50mm)	12	240	6 89133 15442 4
15425	2-1/2" (63mm)	12	120	6 89133 15425 7
15443	3" (75mm)	12	120	6 89133 15443 1





Absorption
★★★★☆

Control
★★★★☆

Finish
★★★★☆

Robustness
★★★★☆

100% mixed polyester, steel ferrule, solid plastic handle. Flagged filament ends. Flat.

Item#	Description	Box	Cardboard	UPC code
15091	1" (25mm)	12	240	6 89133 15091 4
15092	2" (50mm)	12	240	6 89133 15092 1
15093	3" (75mm)	12	120	6 89133 15093 8



Absorption
★★★☆☆

Control
★★★☆☆

Finish
★★★☆☆

Robustness
★★★★☆

100% polyester, steel ferrule, solid plastic handle. For general or industrial use. Flat.

Item#	Description	Box	Cardboard	UPC code
14215	3/5" (15mm)	24	480	6 89133 14215 5
14230	1-1/4" (30mm)	24	480	6 89133 14230 8
14250	2" (50mm)	12	240	6 89133 14250 6
14275	3" (75mm)	12	240	6 89133 14275 9
14200	4" (100mm)	12	120	6 89133 14200 1



Absorption
★★★★☆

Control
★★★☆☆

Finish
★★★★☆

Robustness
★★★★☆

100% natural bristle, steel ferrule, wooden handle. For general or industrial use. Flat.

Item#	Description	Box	Carton	UPC code
16405	1/2" (13mm)	24	480	6 89133 16405 8
16411	1" (25mm)	24	480	6 89133 16411 9
16415	1-1/2" (38mm)	24	480	6 89133 16415 7
16412	2" (50mm)	24	480	6 89133 16412 6
16425	2-1/2" (63mm)	12	240	6 89133 16425 6
16413	3" (75mm)	12	240	6 89133 16413 3
16414	4" (100mm)	12	240	6 89133 16414 0

Set of 3 brushes - Polyester

100% premium polyester, stainless steel ferrule, natural wood.
Ideal for small jobs without compromising the quality of the finish.
3 angular brushes.



Absorption



Control



Finish



Robustness



Type of surface

Smooth

Rough



Item#	Description	Box	Carton	UPC code
15833	Ang. 1-1/2", 2" et 2-1/2"	12	72	6 89133 15833 0

Set of 2 brushes - Polyester

100% mixed polyester, steel ferrule, natural wood handle. Flagged filament ends. Ideal for touch-ups and small jobs. Flat and angular.



Absorption



Control



Finish



Robustness



Type of surface

Smooth

Rough



Item#	Description	Box	Carton	UPC code
11222	Flat 2" Angular 2"	12	72	6 89133 11222 6

Set of 2 brushes - Mixed bristle

Blend of natural bristle and synthetic bristle imitating the characteristics of natural bristle, steel ferrule, wooden handle. Very versatile, for all paints, stains and varnishes. Flat and angular.

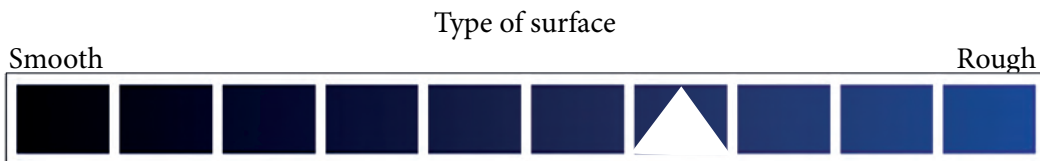


Absorption
★★★★☆

Control
★★★★☆

Finish
★★★★☆

Robustness
★★★★☆



Item#	Description	Box	Carton	UPC code
15222	Flat 2" Angular 2"	12	72	6 89133 15222 2

Set of 3 brushes - Polyester

100% mixed polyester, steel ferrule, plastic handle. Flagged filament ends. Ideal for touch-ups and small jobs. Flat and angular.

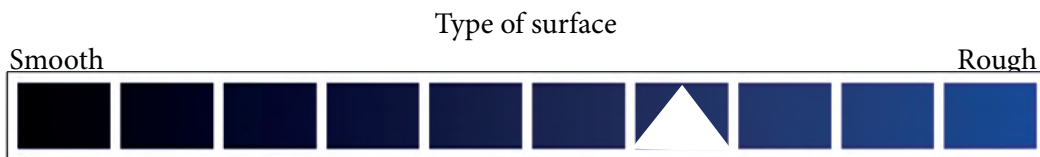


Absorption
★★★★☆

Control
★★★★☆

Finish
★★★★☆

Robustness
★★★★☆



Item#	Description	Box	Carton	UPC code
13509	Flat 2", 3" Angular 1-1/2"	12	72	6 89133 13509 6

Set of 4 brushes - Polyester

100% mixed polyester, steel ferrule, plastic handle. Flagged filament ends. Ideal for touch-ups and small jobs. Flat and angular.

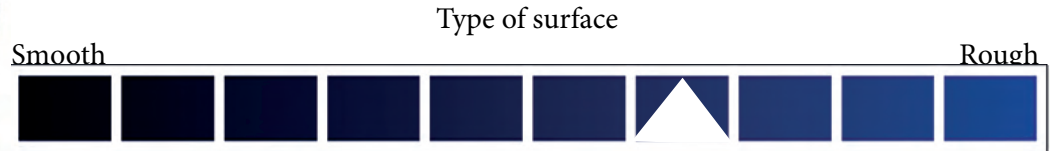


Absorption
★★★★☆

Control
★★★★☆

Finish
★★★★☆

Robustness
★★★★☆



Item#	Description	Box	Carton	UPC code
14509	Flat 1", 2", 3" Angular 1-1/2"	12	72	6 89133 14509 5

Set of 4 brushes - Polyester

100% polyester, steel ferrule, plastic handle. Ideal for touch-ups and small tasks. Flat and angled.

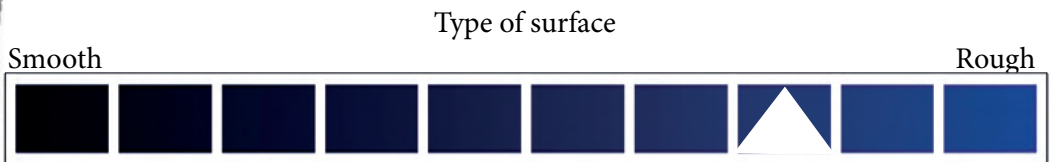


Absorption
★★★★☆

Control
★★★★☆

Finish
★★★★☆

Robustness
★★★★☆



Item#	Description	Box	Carton	UPC code
14409	Flat 1", 2", 3" Angular 1-1/2"	12	72	6 89133 14409 8

Set of 4 brushes - Black bristle

100% black bristle, steel ferrule, dyed and varnished natural wood. Ideal for small jobs without compromising the quality of the finish. Flat and angular.

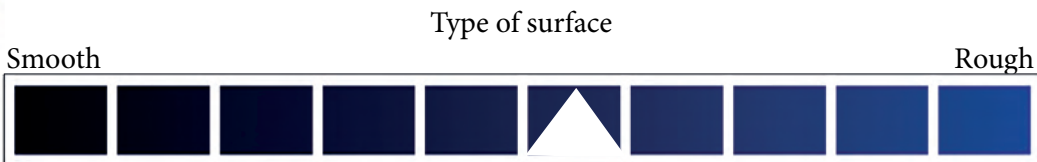


Absorption
★★★★☆

Control
★★☆☆☆

Finish
★★★★☆

Robustness
★★★★☆



Item#	Description	Box	Carton	UPC code
14628	Flat 1", 2", 3" Angular 1-1/2"	12	72	6 89133 14628 3

Set of 3 brushes - White bristle

100% white bristle, steel ferrule, natural wood handle. Ideal for touch-ups and small jobs. Flat.

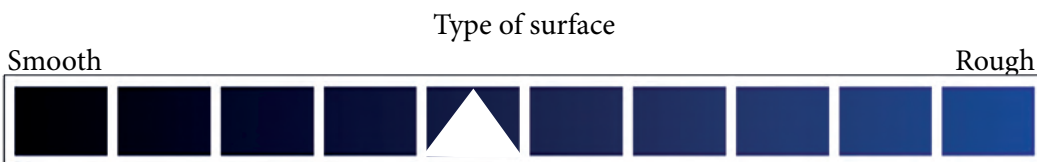


Absorption
★★★★☆

Control
★★☆☆☆

Finish
★★★★☆

Robustness
★★★★☆



Item#	Description	Box	Carton	UPC code
Set of 3: 13161	Flat 1-1/2", 2", 2-1/2"	12	100	6 89133 13161 6

Stain Brush

Absorption



Control



Finish



Robustness



Type of stain

Water-based



Oil-based



Type of surface

Smooth

Rough



Characteristic

100% mixed polyester, plastic handle with threaded tip allowing this brush to be used with an extension pole. For interior and exterior work. For all paints and stains and waterproofing products. For wood, stucco, brick, concrete, etc...



Item#	Description	Box	Carton	UPC code
16344	4" (100mm)	6	60	6 89133 16344 0



Stain Brushes

100% natural white bristle, removable handle to install an extension pole. Flat.



Type of stain

Water-based



Oil-based



Type of surface

Smooth

Rough



Standard threaded handle

16355



Item#	Description	Box	Carton	UPC code
100% white bristle:				
16354	4" (100mm)	6	60	6 89133 16354 9
16355	5-1/2" (140mm)	6	60	6 89133 16355 6

Stain Brushes

Blend of natural bristle and polyester for greater versatility, wooden handle. Flat.



Type of stain

Water-based



Oil-based



Type of surface

Smooth

Rough



Item#	Description	Box	Carton	UPC code
Bristle and polyester blend:				
16350	2" (50mm)	12	240	6 89133 16350 1
16375	3" (75mm)	12	120	6 89133 16375 4
16300	4" (100mm)	12	120	6 89133 16300 6



Absorption ★★☆☆☆ **Control** ★★☆☆☆ **Finish** ★★☆☆☆ **Robustness** ★★☆☆☆

100% black bristle, steel ferrule, natural wood handle. Excellent for oil products, especially varnish. Flat.

Item#	Description	Box	Carton	UPC code
16675	3" (75mm)	12	120	6 89133 16675 5



Absorption ★★☆☆☆ **Control** ★★☆☆☆ **Finish** ★★☆☆☆ **Robustness** ★★☆☆☆

Radiator brush for hard-to-reach places. Flat.

Item#	Description	Box	Carton	UPC code
White bristle:				
10638	1-1/2" (38mm)	24	240	6 89133 10638 6
10650	2" (50mm)	24	240	6 89133 10650 8
10663	2-1/2" (63mm)	24	240	6 89133 10663 8
Polyester:				
10738	1-1/2" (38mm)	24	240	6 89133 10738 3
10763	2-1/2" (63mm)	24	240	6 89133 10763 5



Absorption ★★☆☆☆ **Control** ★★☆☆☆ **Finish** ★★☆☆☆ **Robustness** ★★☆☆☆

High density black foam brush, natural wood handle. Ideal for touch-up or work on smooth surfaces. Flat.

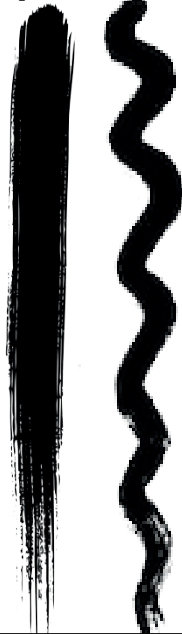
Item#	Description	Box	Carton	UPC code
18251	1" (25mm)	24	480	6 89133 18251 9
18252	2" (50mm)	24	480	6 89133 18252 6
18253	3" (75mm)	12	360	6 89133 18253 3
18254	4" (100mm)	12	360	6 89133 18254 0
Set of 3:				
13825	Flat 1",2",3"	48	144	6 89133 13825 7

Round Artist Brush

100% white bristle, varnished wooden handle, metal ferrule. For all types of paint. Classic brush for painting, it is used to create multiple simple shapes. It has good firmness for stiffer control.



Example of filament stroke



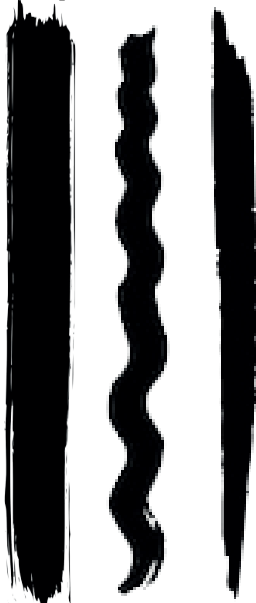
Item#	Description	Box	Carton	UPC code
17581	no. 1	12	480	6 89133 17581 8
17582	no. 2	12	480	6 89133 17582 5
17583	no. 3	12	480	6 89133 17583 2
17584	no. 4	12	480	6 89133 17584 9
17585	no. 5	12	480	6 89133 17585 6
17586	no. 6	12	480	6 89133 17586 3
17587	no. 7	12	480	6 89133 17587 0
17588	no. 8	12	480	6 89133 17588 7
17589	no. 9	12	480	6 89133 17589 4
17510	no. 10	12	240	6 89133 17510 8
17511	no. 11	12	240	6 89133 17511 5
17512	no. 12	12	240	6 89133 17512 2

Flat Artist Brush

100% white bristle, varnished wooden handle, metal ferrule. For all types of paint. Classic brush for painting, it is used to create different lines ranging from the broadest to the finest. It has good firmness for stiffer control.



Example of filament stroke



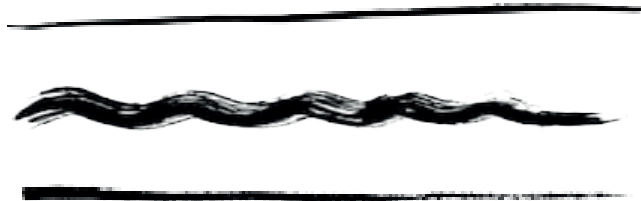
Item#	Description	Box	Carton	UPC code
17571	no. 1	12	480	6 89133 17571 9
17572	no. 2	12	480	6 89133 17572 6
17573	no. 3	12	480	6 89133 17573 3
17574	no. 4	12	480	6 89133 17574 0
17575	no. 5	12	480	6 89133 17575 7
17576	no. 6	12	480	6 89133 17576 4
17577	no. 7	12	480	6 89133 17577 1
17578	no. 8	12	480	6 89133 17578 8
17579	no. 9	12	480	6 89133 17579 5
17610	no. 10	12	240	6 89133 17610 5
17611	no. 11	12	240	6 89133 17611 2
17612	no. 12	12	240	6 89133 17612 9

Artist Brush Set

Set of 10 pieces. Highest quality white bristle and camel hair. Stained wood handle. The white bristle offers excellent control and stiffness while the camel hair is supple and soft. Point and flat. For all paints.



Example of filament stroke



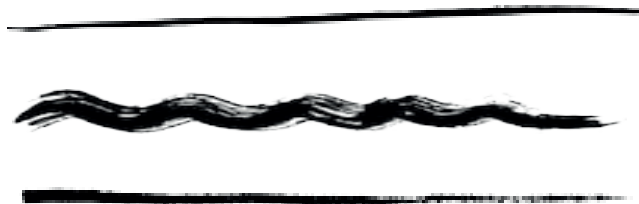
Item#	Description	Box	Carton	UPC code
12098	Round no.1,2,3,5 Flat no. 4, 8	24	144	6 89133 12098 6

Artist Brush Set

Set of 5 pieces. Highest quality black bristle and camel hair. Stained wood handle. The black bristle offers excellent control and stiffness while the camel hair is flexible and soft. Point and flat. For all paints.



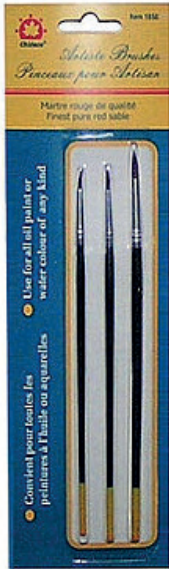
Example of filament stroke



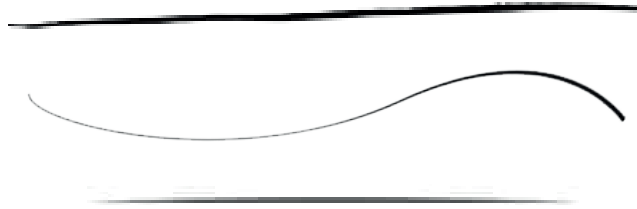
Item#	Description	Box	Carton	UPC code
18505	no. 2, 4(2), 6(2)	12	144	6 89133 18505 3

Artist Brush Set

Set of 3 pieces. Highest quality red sable. Stained wood handle. Red sable is best for precision, it allows the greatest control compared to other filament type. Pointed tip. For all paints.



Example of filament stroke



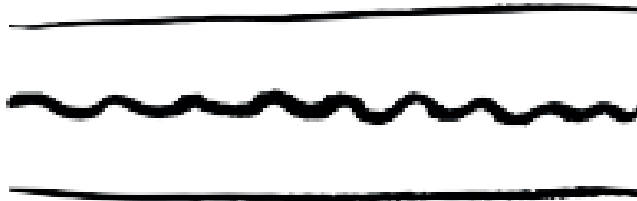
Item#	Description	Box	Carton	UPC code
18503	no. 1, 3, 5	12	144	6 89133 18503 9

Artist Brush Set

Set of 3 pieces. Highest quality white bristle. Stained wood handle. The white bristle provides excellent control and nice stiffness, combined with the sharp tip it provides paint release without mess. Pointd tip. For all paints.



Example of filament stroke



Item#	Description	Box	Carton	UPC code
18515	no. 1, 3, 5	12	144	6 89133 18515 2

Artist Brush Set

Set of 3 pieces. High quality of dark ox hair. Stained wood handle. Ox hair offers the greatest flexibility, it is not used for precision but is useful for making gradients among other things. Flat. For all paints.



Example of filament stroke



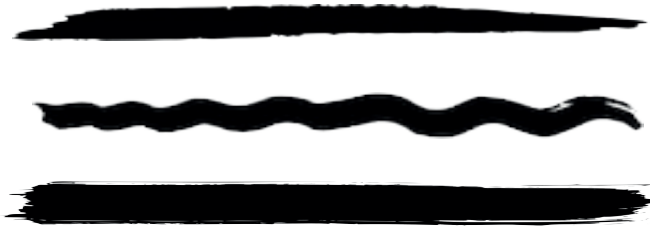
Item#	Description	Box	Carton	UPC code
18513	no. 2, 4, 6	12	144	6 89133 18513 8

Artist Brush Set

Set of 3 pieces. Highest quality white bristle. Stained wood handle. White bristle offers excellent control and stiffness to produce lines of different sizes. Flat. For all paints.



Example of filament stroke



Item#	Description	Box	Carton	UPC code
18516	no. 2, 4, 6	12	144	6 89133 18516 9

OUR TOP QUALITY ROLLER

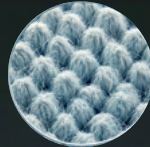
Discover the exceptional performance of our professional rollers. Designed to provide even coverage and effortless application, our rollers feature high fiber density and innovative construction.

1

High fiber density (FPI)

Our rollers are manufactured with a high Fiber density Per Inch (FPI), which allows effortless and uniform paint application. This high density is particularly suitable for high viscosity paints which require a higher FPI level, which ensures optimal coverage with less

streaking and touch-ups required.



Chidaca roller



Competition

2

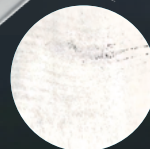
Fabric fusion process

Some of our rollers use a unique process where the fabric is fused to the polypropylene center without the use of glue. This process involves heating the exterior of the polypropylene center, allowing the fabric to fuse directly to the center. This ensures a more durable and uniform adhesion of the fabric, improving the performance and durability of the roll.

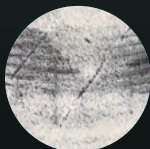
3

Center in Polypropylene

The center of our rollers is made of polypropylene, a light and durable material. This material provides excellent durability while reducing the weight of the roller, making paint application easier and less tiring for the user.



Test with a Chidaca roller on a black background



Test with a competition roller, roller stroke and low coverage is noticeable

4

Exclusive roller quality

We partner with one of the largest factories in the world, giving us access to premium and exclusive fabrics. This collaboration ensures we use the highest quality materials, resulting in rollers that are more durable, more efficient and capable of delivering professional results with every use.

Microfiber

Absorption



Control



Finish



Robustness



Type of paint / viscosity



Type of surface



Characteristic

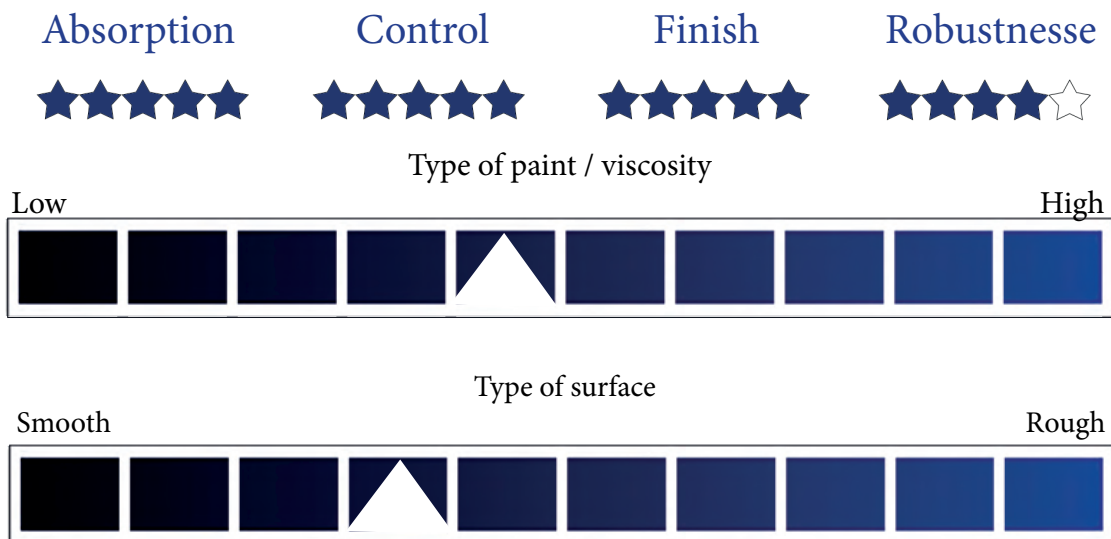
High density lint-free microfiber roller. The fineness of its fiber combined with its high density offers a high absorption capacity with an exceptional finish. PVC center.



Item#	Description	Box	Carton	UPC code
95603	3" (75mm) x 10mm	1	200	6 89133 95603 5
95604	4" (100mm) x 10mm	1	200	6 89133 95604 2
95657	7.5" (190mm) x 10mm	1	120	6 89133 95657 8
95606	9.5" (240mm) x 6mm	10	120	6 89133 95606 6
95610	9.5" (240mm) x 10mm	10	120	6 89133 95610 3
95613	9.5" (240mm) x 13mm	10	120	6 89133 95613 4
95615	9.5" (240mm) x 15mm	10	120	6 89133 95615 8



Microfiber set



Characteristic

High density lint-free micro-fiber roll. The fineness of its fiber combined with its high density offers great absorption capacity with an exceptional finish. PVC center.

Item#	Description	Box	Carton	UPC code
Set of 3:				
35395	9.5”(240mm) x 10mm	1	40 sets	6 89133 35395 7
35396	9,5”(240mm) x 13mm	1	40 sets	6 89133 35396 4
Set of 6:				
35695	9.5”(240mm) x 10mm	1	20 sets	6 89133 35695 8
Set of 10:				
35095	9.5”(240mm) x 10mm	1	10 sets	6 89133 35095 6





Lint-free

Absorption



Control



Finish



Robustness



Type of paint / viscosity



Type of surface



Characteristic

High density lint-free roller made from a synthetic fabric blend. Woven fabric. PVC center.

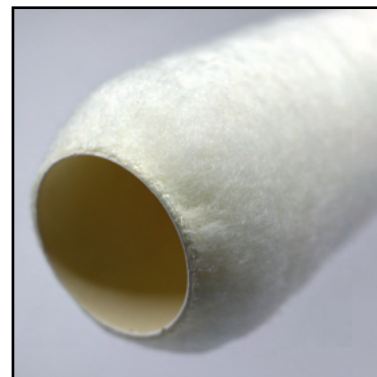
Item#	Description	Box	Carton	UPC code
95653	3" (75mm) x 6mm	1	200	6 89133 95653 0
95654	4" (100mm) x 6mm	1	200	6 89133 95654 7
95630	3" (75mm) x 10mm	1	200	6 89133 95630 1
95640	4" (100mm) x 10mm	1	200	6 89133 95640 0
96410	9.5" (240mm) x 10mm	10	120	6 89133 96410 8
96413	9.5" (240mm) x 13mm	10	120	6 89133 96413 3
96415	9.5" (240mm) x 15mm	10	120	6 89133 96415 6
96418	18" (457mm) x 10mm	1	60	6 89133 96418 4
96419	18" (457mm) x 18mm	1	60	6 89133 96419 1
Set of 3				
36395	9.5" (240mm) x 10mm	1	40 sets	6 89133 36395 6



36395



95630



'Essential' roller

Absorption



Control



Finish



Robustness



Type of paint / viscosity



Type of surface



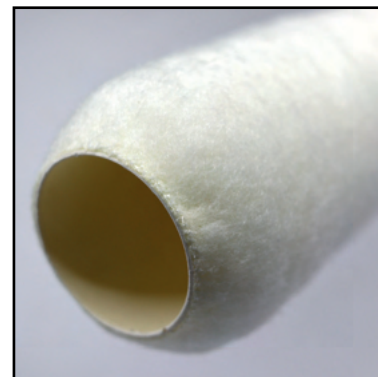
Characteristic

100% high density lint free polyester roller. Thanks to a new weaving technology, this roller offers excellent value for money. PVC core.

Item#	Description	Box	Carton	UPC code
96110	9.5"(240mm) x 10mm	10	120	6 89133 96110 7
- Set of 3:				
37395	9.5"(240mm) x 10mm	1	40 sets	6 89133 37395 5



37395

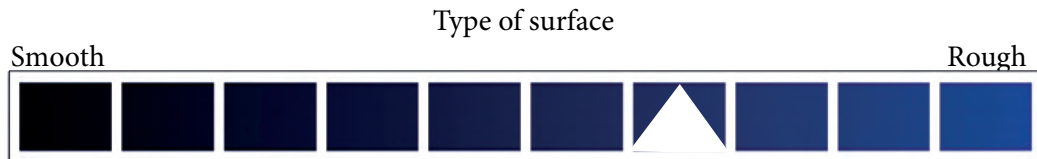


Economy roller



Absorption	Control	Finition	Robustness
★★★★☆	★★★★☆	★★★★☆	★★★★☆

Polyester fabric, PVC center. For general or industrial use.



Item#	Description	Box	Carton	UPC code
38310	3" (75mm) x 6mm	1	200	6 89133 38310 7
38410	4" (100mm) x 6mm	1	200	6 89133 38410 4
38950	9.5" (240mm) x 10mm	1	120	6 89133 38950 5

Roller for coating application

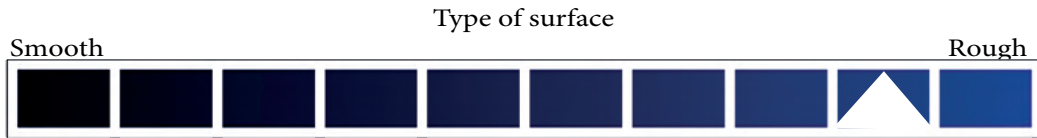


Absorption	Control	Finition	Robustness
★★★★☆	★★★★☆	★★★★☆	★★★★☆

Polyester fabric, PVC core. For general or industrial use such as asphalt driveways, wood, plywood, brick and cement, designed for rough surfaces, for coating application.

Use:

- Driveway
- Wood and plywood
- Brick and cement



Item#	Description	Box	Carton	UPC code
38919	9.5" (240mm) x 19mm	1	120	6 89133 38919 2

Set of 4 economy roller

Absorption



Control



Finition



Robustness



Polyester fabric, PVC center. For general or industrial use.

Type of surface

Smooth

Rough



Item#	Description	Box	Carton	UPC code
38495	9.5"(240mm) x 10mm	1	30 sets	6 89133 38495 1

Microfiber mini-roller

Absorption



Control



Finition



Robustness



Type of paint / viscosity



Type of surface



Characteristic

Microfiber mini roller, lint-free. Ideal for a smooth finish. For all paints. Can be used for varnishes or stains.

Item#	Description	Box	Carton	UPC code
-Set of 2 pcs:				
61210	4" (100mm) x 10mm	1	100 sets	6 89133 61210 8
-Set of 10 pcs:				
61110	4" (100mm) x 10mm	1	20 sets	6 89133 61110 1



61110



Fabric mini-roller

Absorption



Control



Finition



Robustness



Type of paint / viscosity



Type of surface



Characteristic

Mini fabric roller. Ideal for touch-ups and small jobs. For all paints.

Item#	Description	Box	Carton	UPC code
62410	4"(100mm) x 10mm	10	500	6 89133 62410 1
62610	6"(150mm) x 10mm	10	500	6 89133 62610 5
- Set of 10pcs				
62110	4"(100mm) x 10mm	1	20 sets	6 89133 62110 0



Foam mini-roller



Absorption



Control



Finition



Robustness



Type of paint / viscosity



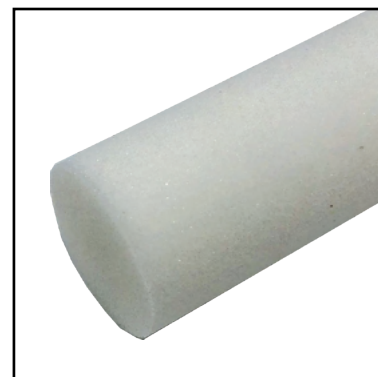
Type of surface



Characteristic

High density foam mini roller. Ideal for smooth finishes on smooth surfaces. It is used for melamine, urethane products, varnishes and some type of stains.

Item#	Description	Box	Carton	UPC code
60410	4"(100mm) x 10mm	10	500	6 89133 60410 3
60610	6"(150mm) x 10mm	10	500	6 89133 60610 7
- Set of 10pcs				
60110	4"(100mm) x 10mm	1	20 sets	6 89133 60110 2



'Rubber' roller frame

Professional quality 9.5" roller frame with 5 straight wires. Its rod is longer than the market standard giving it additional reach. Its rubber handle is comfortable and fully molded to the central rod and larger than the standard.



Longer rod



Molded handle



Comfortable handle

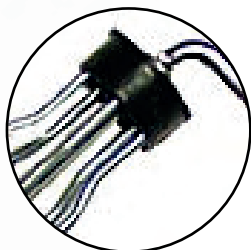


Standard threaded handle

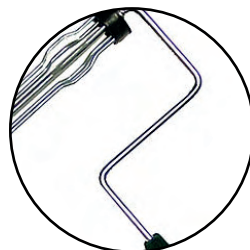
Item#	Description	Box	Carton	UPC code
09588	9.5" (240mm)	---	24	6 89133 09588 8

'Green' roller frame

Professional quality 9.5" roller frame with 5 undulated wires. It has extra-thick wires (the thickest on the market) which gives it exceptional roller retention.



Extra-thick wire



Solid square structure



Metal retaining ring



Standard threaded handle

Item#	Description	Box	Carton	UPC code
09584	9.5"(240mm)	24	48	6 89133 09584 0

Professional quality roller frame. 9.5" with 5 undulated wires, solid square structure and ergonomic handle with metal retaining ring.



Standard threaded handle

Item#	Description	Box	Carton	UPC code
09585	9.5"(240mm)	24	48	6 89133 09585 7

Good quality roller frame. 9.5" with 5 undulated wires, ergonomic handle with metal retaining ring.



Standard threaded handle

Item#	Description	Box	Carton	UPC code
09565	9.5"(240mm)	24	48	6 89133 09565 9

Good quality roller frame. 7.5" with 5 straight wires, ergonomic handle with metal retaining ring.



Standard threaded handle

Item#	Description	Box	Carton	UPC code
07564	7.5" (190mm)	24	96	6 89133 07564 4

Mini cage mount. 4 straight wires, for 3" and 4" rollers, ergonomic handle with metal retaining ring.

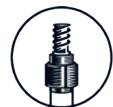


03648

Standard threaded handle

Item#	Description	Box	Carton	UPC code
Mini roller cage:				
03648	3" (75mm)	1	96	6 89133 03648 5
04648	4" (100mm)	1	96	6 89133 04648 4

Single wire roller frame. 1 rod for 4" or 6" mini roller, ergonomic handle with metal retaining ring.



00412

Standard threaded handle

Item#	Description	Box	Carton	UPC code
Single wire mini roller cage:				
00412	4" x 12" (10cm x 30cm)	1	72	6 89133 00412 5
00416	4" x 16" (10cm x 40cm)	1	72	6 89133 00416 3
00424	4" x 24" (10cm x 61cm)	1	72	6 89133 00424 8

Adjustable roller cage for 18" roller.



09598



Standard threaded handle

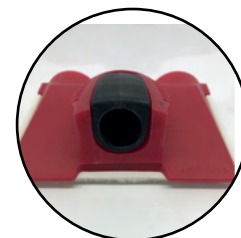


09599

Item#	Description	Box	Carton	UPC code
Fiberglass structure, professional quality:				
09598	18" - 22" (45cm - 55cm)	1	24	6 89133 09598 7
Plastic tip for 18" roller cage				
09599	2pcs set	1	500	6 89133 09599 3

Paint edger

Paint applicator with wheel as guide, can be installed on an extension pole, with adjustable angle, replaceable pad, for cutting, for smooth and semi-smooth surface.



Item#	Description	Box	Carton	UPC code
38306	Edger	1	12	6 89133 38306 0

Refill pad for #38306:
38316 Set of 2

1	40 sets	6 89133 38316 9
---	---------	-----------------



Standard threaded handle

Paint applicator

Paint, stain or varnish applicator, rubber handle with adjustable angle, can be installed on an extension pole, fits with 7" or 9" refills.



Item#	Description	Box	Carton	UPC code
38303	7"	1	6	6 89133 38303 9

Pad refill for 38303:

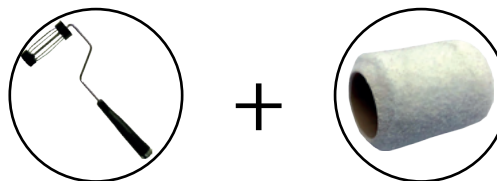
38313	7"	1	20	6 89133 38313 8
38323	9"	1	20	6 89133 38323 7



Standard threaded handle

Painting set - mini roller frame

3" or 4" mini roller cage with threaded tip combined with a 3" or 4" microfiber roller.

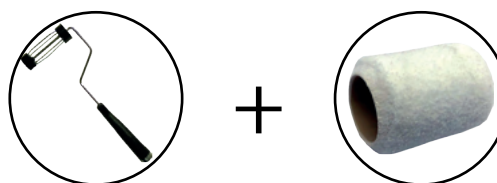


Standard threaded handle

Item#	Description	Box	Carton	UPC code
Lint free:				
31307	3" (75mm) x 6mm	1	96	6 89133 31307 4
31407	4"(100mm) x 6mm	1	96	6 89133 31407 1

Painting set - mini roller cage

3" or 4" mini roller cage with threaded tip combined with a 3" or 4" lint free roller.



Standard threaded handle

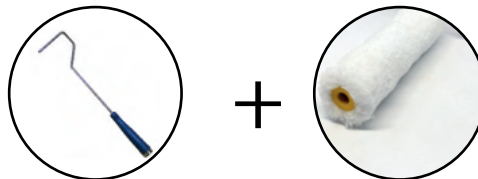
Item#	Description	Box	Carton	UPC code
Lint free:				
31306	3" (75mm) x 6mm	1	96	6 89133 31306 7
31406	4"(100mm) x 6mm	1	96	6 89133 31406 4

Painting set - single wire roller frame

4" single-wire roller frame with threaded tip handle. With microfiber 'euro' style roller. Different rod heights depending on the desired reach.



Standard threaded handle



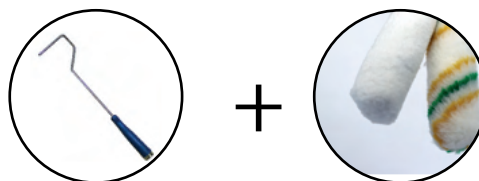
Item#	Description	Box	Carton	UPC code
Microfiber:				
64412	4"(10cm) + 12"(36cm)	1	96	6 89133 64412 3
64416	4"(10cm) + 16"(40cm)	1	96	6 89133 64416 1

Painting set - single wire roller frame

4" single-wire roller frame with threaded tip handle. With fabric or foam 'euro' style roller. Different rod heights depending on the desired reach.



Standard threaded handle

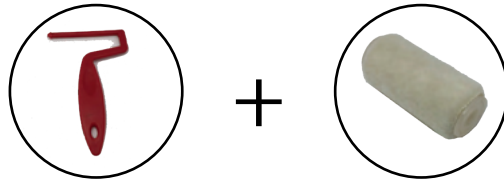


Item#	Description	Box	Carton	UPC code
Fabric:				
63412	4"(10cm) + 12"(36cm)	1	96	6 89133 63412 4
63416	4"(10cm) + 16"(40cm)	1	96	6 89133 63416 2
63624	6"(15cm) + 24"(61cm)	1	96	6 89133 63624 1
Foam:				
61412	4"(10cm) + 12"(36cm)	1	96	6 89133 61412 6
61416	4"(10cm) + 16"(36cm)	1	96	6 89133 61416 4
61624	6"(15cm) + 24"(61cm)	1	96	6 89133 61624 3

Painting set - mini roller for touch-ups



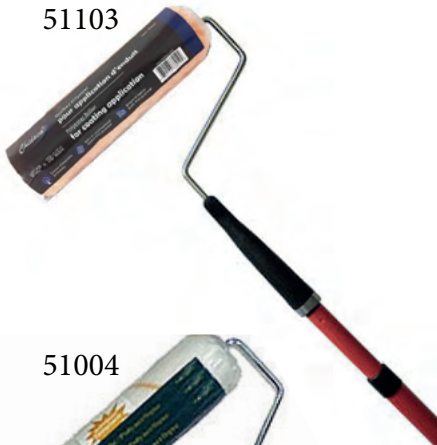
Mini plastic roller frame with 3" mini polyester roller for touch-ups. Lint free.



Item#	Description	Box	Carton	UPC code
63310	3"	1	48	6 89133 63310 3

Painting set - with extension pole

51103



3-piece set with roller, 9.5" roller cage and metal extension handle



51004



Threaded handle standard

Item#	Description	Box	Carton	UPC code
In Polyester (for coating application):				
51103	9.5" (240mm) x 19mm	1	12	6 89133 51103 6
Lint-free:				
51004	9.5"(240mm) x 10mm	1	20	6 89133 51004 6

Painting Set - Mini Tray 3 pcs



3” mini-tray made from recycled plastic, small 3” cage frame with roller and 1” foam brush. For touch-up and finishing.



Resealable and reusable bag



Item#	Description	box	Carton	UPC code
52000	kit 3 pcs	1	48	6 89133 52000 7

Ensemble à peindre - Sans-charpie 3 pcs



Good quality 4” mini-tray, 4” roller cage and 6mm lint-free roller 4”.



Item#	Description	Box	Carton	UPC code
52043	kit 3 pcs	1	24	6 89133 52043 4

Painting set - Mini-tray 3 pcs

4" tray made from recycled plastic, 4" single-wire roller frame and 'euro' style roller in fabric, foam or microfiber.



+



+



Item#	Description	Box	Carton	UPC code
In fabric:				
52032	Kit 3 pcs	1	48	6 89133 52032 8
In foam:				
52033	Kit 3 pcs	1	48	6 89133 52033 5
In microfiber:				
52034	Kit 3 pcs	1	48	6 89133 52034 4



Ecological



Painting set - Microfiber 5 pcs

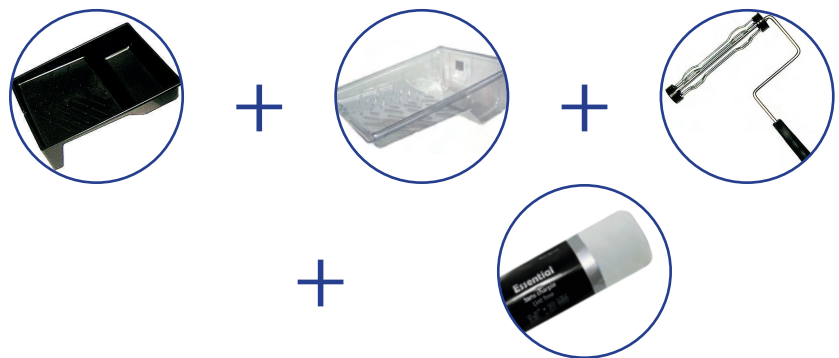
Good quality tray, liner, professional roller cage, 2" professional angular polyester brush, 10mm microfiber roller.



Item#	Description	Box	Carton	UPC code
50005	Kit 5 pcs	1	24	6 89133 50005 4

Painting set - Lint-free 4 pcs

Good quality 9.5" tray, liner, professional roller cage, 10mm lint-free roller.



Item#	Description	Box	Carton	UPC code
50004	Kit 4 pcs	1	24	6 89133 50004 7

Painting set - Lint-free 3 pcs

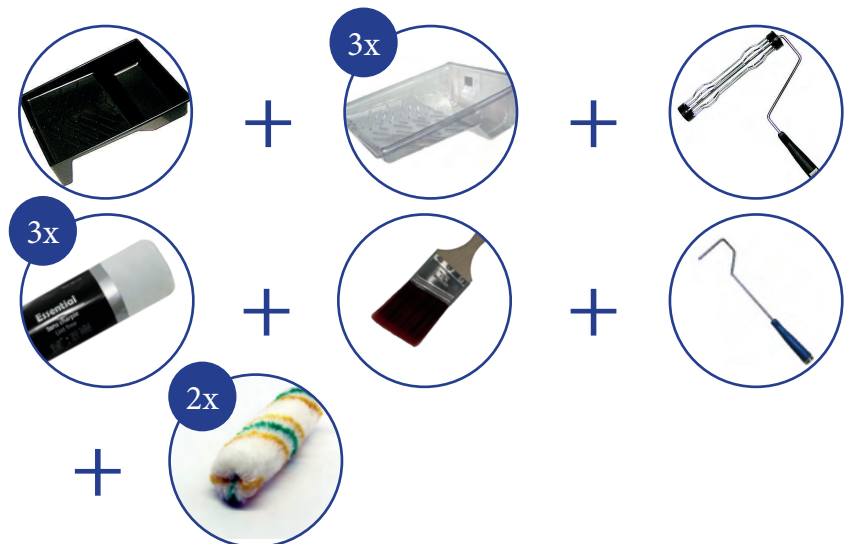
9.5" disposable tray, cage frame, 10mm lint-free roller.



Item#	Description	Box	Carton	UPC code
50003	Kit 3 pcs	1	24	6 89133 50003 0

Painting set - Lint-free 12 pcs

9.5" tray, 3x liners, 9.5" roller cage, 3x 10mm lint-free roller, 1x 2" polyester brush, 1x single-wire roller cage, 2x mini-lint-free fabric rollers.



Item#	Description	Box	Carton	UPC code
50000	Kit 12 pcs	1	24	6 89133 50000 9

Plastic tray

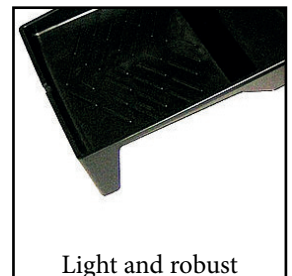
Tray ultra-robust 9.5", 4L capacity. It has 4 handles and one of the best resistances on the market. It is made from recycled plastic just like its lining.



Item#	Description	Box	Carton	UPC code
52028	9.5" - 4L	---	20	6 89133 52028 1
52019	for item #52028, 9.5"-4L	---	50	6 89133 52019 9

Plastic tray

Tray for 9.5" roller, excellent quality, 2L capacity. It is lightweight but sturdy and made of easy-to-clean plastic. It is made from recycled plastic just like its lining.



Item#	Description	Box	Carton	UPC code
52012	9.5" - 2L	---	50	6 89133 52012 0
52013	for item #52012, 9.5"-2L	---	100	6 89133 52013 7

Liner for metal tray

Lining made from recycled plastic for 9.5" metal tray (standard market format).



52021



52022



52020



Item#	Description	Box	Carton	UPC code
52022	9.5"-1L	---	50	6 89133 52022 9
52020	9.5"-2L	---	50	6 89133 52020 5
52021	9.5"-4L	---	50	6 89133 52021 2

Disposable plastic tray

Tray for 18" roller, good quality. Ideally for single use. For general work, large surface work.



52018

Item#	Description	Box	Carton	UPC code
52018	18" - 6L	1	20	6 89133 52018 2

Mini plastic tray

Tray for small roller or brush, 3", 4" or 6", good quality. Ideally for single use. For general work, small jobs and touch-ups.



52016



52014



52114

Item#	Description	Box	Carton	UPC code
52016	6" - 0.75L econo	1	100	6 89133 52016 8
52014	4" - 0.5L	1	50	6 89133 52014 4
52114	4" - 0.5L econo	1	100	6 89133 52114 1

Eco-friendly mini tray

Tray made from 100% recycled plastic. Good quality, ideal for small jobs and touch-ups



52044



52024

Recycle me!

After use, completely wash all traces of paint from these trays and send them for recycling.



Item#	Description	Box	Carton	UPC code
52044	3" - 0.3L	1	200	6 89133 52044 1
52024	4" - 0.5L	1	200	6 89133 52024 3

CHIDACA®

EXTENSION POLE IN FIBERGLASS

Durable & reliable

Our fiberglass extension handle with exclusive “round” knob provides unmatched durability and performance. Try it today and experience the difference.

- Durable button: more durable than the competition
- Seal button: prevents paint infiltration
- Hexagonal structure: Aluminum hexagonal for increased rigidity



A visible difference

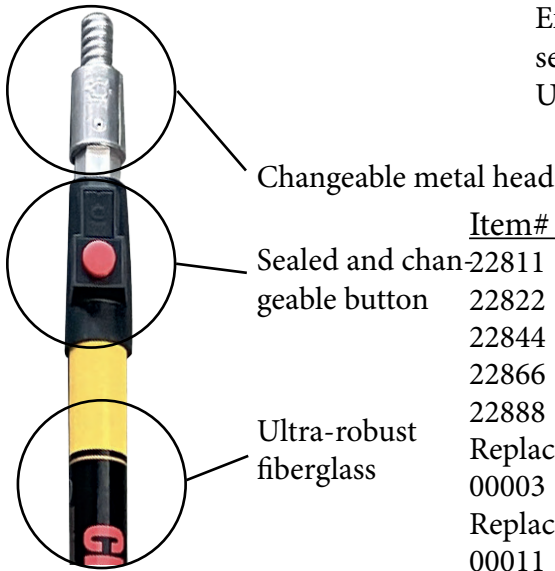
Reinforced mechanism

Our handle is distinguished by its entirely metal head, which prevents any risk of breakage. Unlike competing products, our mechanism is reinforced and sealed, ensuring superior durability and performance. The square knobs on the market are not only flimsy but also allow paint to seep through. With our innovative design, you benefit from a robust and reliable tool, perfectly adapted to the requirements of professionals.

Hexagonal structure

Our competitors' handles use a rounded structure, which compromises stability, particularly at high heights where precision is crucial. In contrast, our handle is designed with a hexagonal structure which provides superior rigidity and stability, reduces unwanted movement and ensures optimal precision. For professionals looking for reliability and precision in their tools, our hexagonal extension handle is the ideal choice.

EXTENSION POLE - FIBERGLASS



Exterior extension handle in fiberglass and interior in aluminum 2 sections. Robust, rust-proof and ultra-stable. Changeable metal head. Ultra-robust pin lock system. Hexagonal structure.

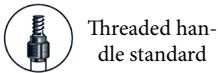
Changeable metal head

Sealed and changeable button

Ultra-robust fiberglass

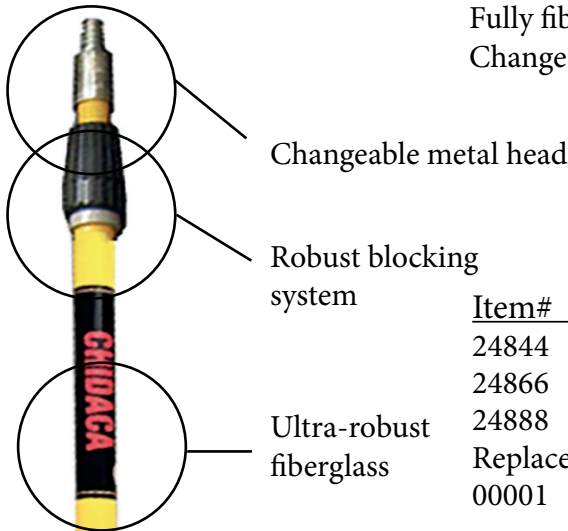
Item#	Description	Box	Carton	UPC code
22811	1' + 1' (2'/60cm) x 26/32mm	1*	12	6 89133 22811 8
22822	2' + 2' (4'/120cm) x 26/32mm	1*	12	6 89133 22822 4
22844	4' + 4' (8'/240cm) x 26/32mm	1*	12	6 89133 22844 6
22866	6' + 6' (12'/366cm) x 26/32mm	1*	6	6 89133 22866 8
22888	8' + 8' (16'/488cm) x 26/32mm	1*	6	6 89133 22888 0
Replacement head:				
00003	Metal - for «Pin lock»	1	288	6 89133 00003 5
Replacement button:				
00011	for «Pin Lock»	1	100 sets	6 89133 00011 0

 **INTERNAL LOCKING SYSTEM 'PIN LOCK'**



*Minimum order: 6 units combined, regardless of model/size.

EXTENSION POLE - FIBERGLASS



Fully fiberglass 2-section extension handle. Ultra-robust, does not rust. Changeable metal head. Ultra-robust external twist lock system.

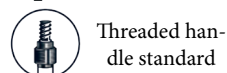
Changeable metal head

Robust blocking system

Ultra-robust fiberglass

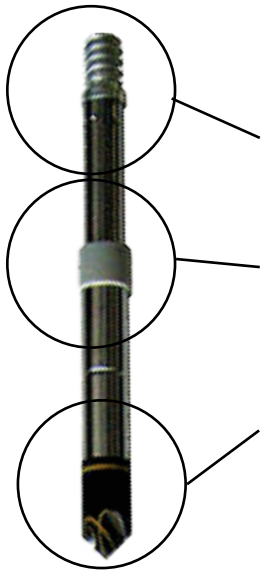
Item#	Description	Box	Carton	UPC code
24844	4' + 4' (240cm) x 26/32mm	1*	12	6 89133 24844 4
24866	6' + 6' (366cm) x 26/32mm	1*	12	6 89133 24866 6
24888	8' + 8' (488cm) x 26/32mm	1*	6	6 89133 24888 8
Replacement head:				
00001	Metal	1*	288	6 89133 00001 1

 **EXTERNAL LOCKING SYSTEM 'TWIST LOCK'**



*Minimum order: 6 units combined, regardless of model/size.

EXTENSION POLE - STAINLESS STEEL



Stainless steel head

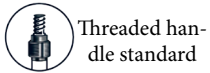
Don't rust

Rigid and solid

2-section stainless steel extension handle. Stainless steel head. 'Internal twist lock' closing system. Anti-rust, rigid and solid material. Even allows sandblasting.

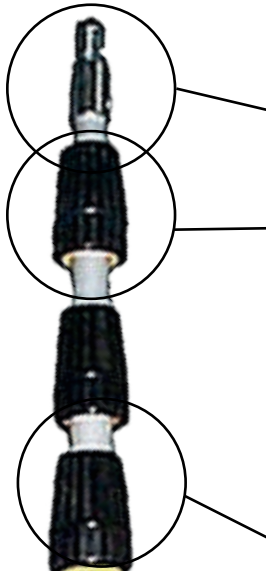
Item#	Description	Box	Carton	UPC code
21822	2' + 2' (120cm) x 19/22mm	1*	12	6 89133 21822 5
21833	3' + 3' (180cm) x 19/22mm	1*	12	6 89133 21833 1
21844	4' + 4' (240cm) x 19/22mm	1*	12	6 89133 21844 7

INTERNAL LOCKING SYSTEM



*Minimum order: 6 units combined, regardless of model/size.

EXTENSION POLE - ALUMINIUM



Metal head

Robust blocking system

Lightweight and compact

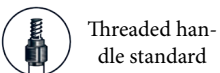
3 or 4 section aluminum extension handle. Lightweight, compact and does not rust. Metal head. Ideal for window washing or other work at height. Also available: squeegee adapter.

Item#	Description	Box	Carton	UPC code
25555	13-1/4', 4 sections	1*	12	6 89133 25555 8
25556	16', 3 sections	1*	12	6 89133 25556 5
53070	Adapter head for squeegee: Plastic	1	288	6 89133 53070 9



53070

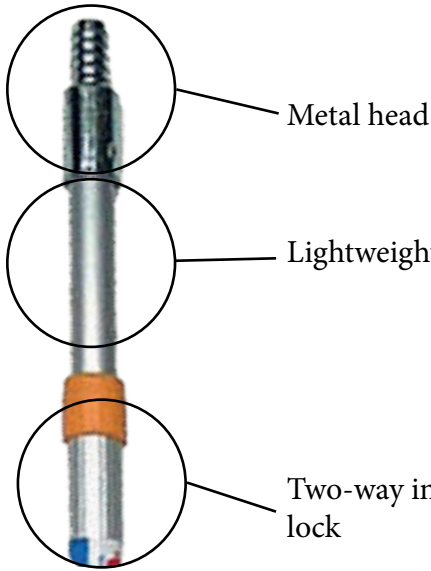
EXTERNAL LOCKING SYSTEM 'TWIST LOCK'



*Minimum order: 6 units combined, regardless of model/size.

EXTENSION POLE - ALUMINIUM

2-section aluminum extension handle. Lightweight and does not rust. Metal head. Internal two-way locking system (locks left or right).



Item#	Description	Box	Carton	UPC code
20322	2' + 2' (120cm) x 21/26mm	1*	24	6 89133 20322 1
20333	3' + 3' (180cm) x 21/26mm	1*	24	6 89133 20333 7
20344	4' + 4' (240cm) x 21/26mm	1*	12	6 89133 20344 3

 **DUAL-ACTION INTERNAL LOCKING SYSTEM**

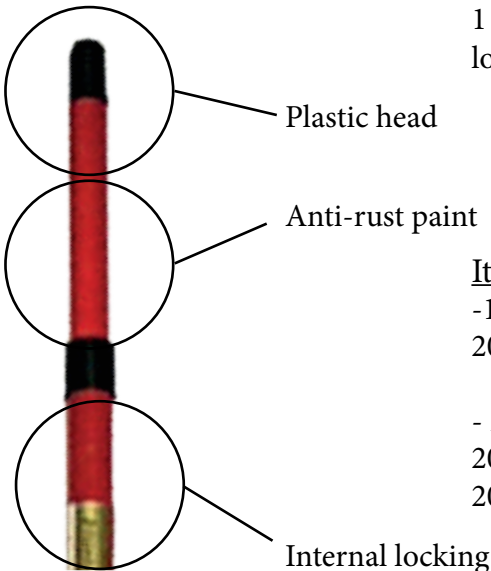
 Threaded handle standard



*Minimum order: 6 units combined, regardless of model/size.


EXTENSION POLE - METAL

1 or 2 section solid metal extension handle. Plastic head. 'Internal twist lock' locking system. Anti-rust paint.



Item#	Description	Box	Carton	UPC code
- 1 section:				
20811	48"(120cm) x 21mm	1*	48	6 89133 20811 0
- 2 sections:				
20802	2' + 2' (120cm) x 19/22mm	1*	48	6 89133 20802 8
20812	3.3' + 3.3' (200cm) x 19/22mm	1*	24	6 89133 20812 7

 **INTERNAL LOCKING SYSTEM**

 Threaded handle standard



*Minimum order: 6 units combined, regardless of model/size.

EXTENSION POLE - FIBERGLASS

1 section fiberglass extension handle. Ultra-robust, lightweight and will not rust. Changeable metal head.



Changeable metal head

Fiberglass

Ultra-strong and lightweight

Item#	Description	Box	Carton	UPC code
21803	60" (150cm) x 25mm	1*	24	6 89133 21803 4
Replacement head:				
00001	Metal	1*	288	6 89133 00001 1



Threaded handle standard



*Minimum order: 6 units combined, regardless of model/size.

OPTIMIZE YOUR RETAIL SPACE WITH OUR DISPLAY BOXES FOR CAULKING GUNS

A simple solution to improve the organization and aesthetics of your department

BEFORE



AFTER



BEFORE: Caulking guns are often displayed in metal baskets or hung on hooks, resulting in a messy, cluttered display. This storage method not only limits the amount of products that can be displayed on shelves, but it also reduces the visual appeal of the shelf, making the shopping experience less pleasant for customers.

AFTER:

1

Space saving:

Previously, a row could hold a maximum of 45 caulking guns, but thanks to our **display boxes**, it can now accommodate up to 84.

3

Ease of installation and use:

Not only are our boxes easy to place on a shelf, but they also allow the number of boxes per product to be quickly adjusted, without the hassle of changing a metal basket, making the adjustment more flexible and efficient.

2

Improved aesthetics:

Our **display boxes** offer a more organized and attractive presentation, attracting more customer attention and increasing visual impact on the shelf.

4

Product distinction:

Each carton is equipped with an informative label, making it easier for consumers to identify the caulking guns compatible with their specific needs, making the choice simpler and faster.

'Chrome' caulking gun



- Ultra-solid chrome structure
- Aluminum handle
- 360° rotating structure
- Nozzle cleaner/perforation tool
- Convenient ladder hook
- "Drip-free" pressure lever to help stop flow
- Hardened steel drive rod
- Full and reinforced nozzle

Utilisation:

- Latex
- Adhesives
- Cement
- Silicone
- Asphalt
- Urethanes
- Acrylic
- Butyl

Item#	Description	Box	Carton	UPC code
31319	9" - 300ml	12	24	6 89133 31319 7

'Pro' caulking gun



- Ultra-solid structure
- Aluminum handle
- 360° rotating structure
- Nozzle cleaner/perforation tool
- Convenient ladder hook
- Hardened steel drive rod
- Reinforced main structure

Utilisation:

- Latex
- Adhesives
- Silicone
- Asphalt
- Acrylic
- Butyl

Item#	Description	Box	Carton	UPC code
31316	9" - 300ml	12	24	6 89133 31316 6
32316	14" - 800ml	---	12	6 89133 32316 5

'Ossature Pro' caulking gun



- Solid structure
- Aluminum handle
- 360° rotating structure
- Nozzle cleaner/perforation tool
- Convenient ladder hook
- Hardened steel drive rod
- Fully closed nozzle
- Reinforced main structure

Use:



Latex

Silicone

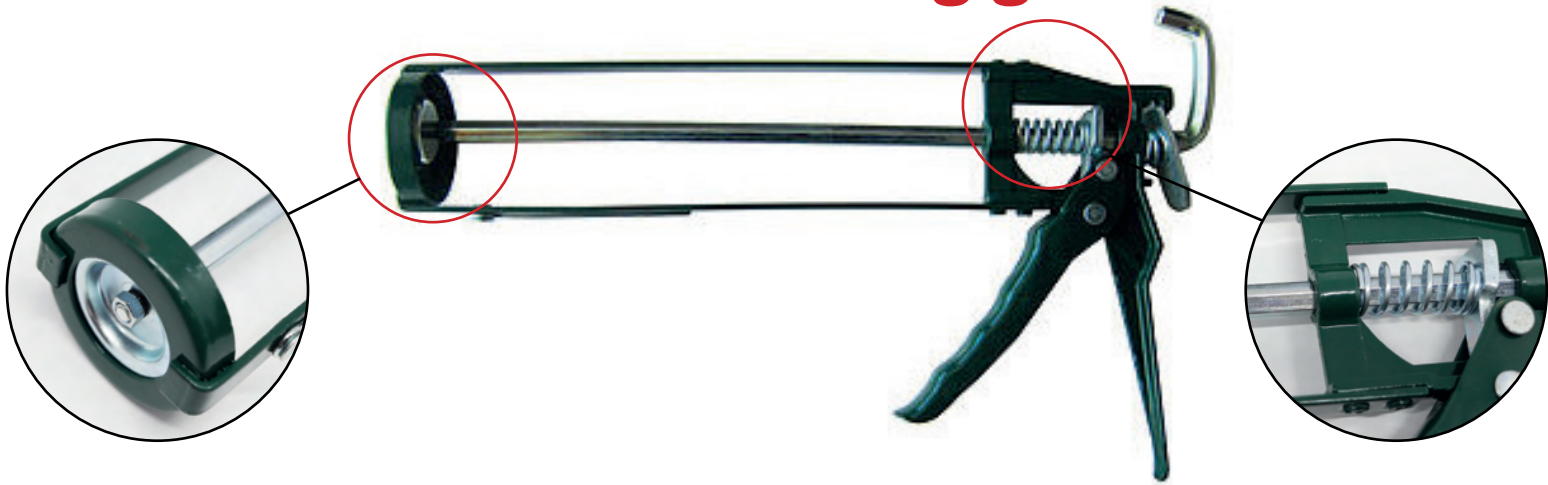
Acrylic



Adhesives

Item#	Description	Box	Carton	UPC code
32118	14" - 800ml	---	12	6 89133 32118 5

'Frame' caulking gun



- Solid structure
- Aluminum handle
- Nozzle cleaner/perforation tool
- Convenient ladder hook
- Hardened steel drive rod
- Fully closed nozzle
- Reinforced main structure

Use:



Latex

Silicone

Item#	Description	Box	Carton	UPC code
31118	9" - 300ml	---	12	6 89133 31118 6



Caulking gun with half-cylindrical structure. In steel, including integrated hook and knife. Ultra-strong.

Utilisation: Latex Adhesives Asphalt
 Silicone Acrylic Butyl

Item#	Description	Box	Carton	UPC code
31117	9" - 300ml	---	24	6 89133 31117 9
32117	14" - 800ml	6	12	6 89133 32117 8



Caulking gun with half-cylindrical structure. Steel, including hook. For small jobs.

Utilisation: Latex
 Silicone

Item#	Description	Box	Carton	UPC code
31119	9" - 300ml	---	24	6 89133 31119 3

Caulking gun for professional or industrial use. Aluminum bag gun.

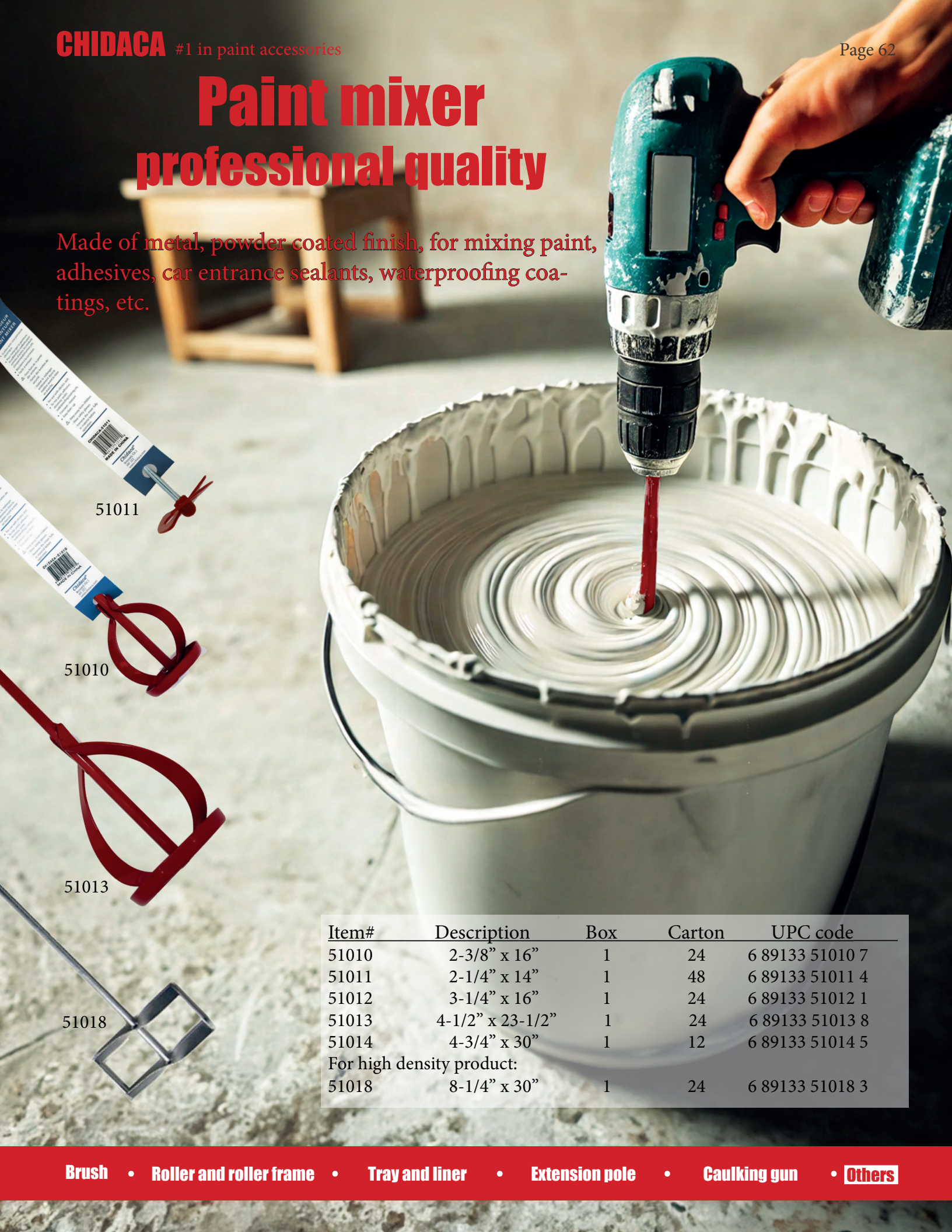


Utilisation: Latex
 Silicone

Item#	Description	Box	Carton	UPC code
34158	9" - 300ml	1	6	6 89133 34158 9
34168	15" - 600ml	1	6	6 89133 34168 8
Plastic nozzle for item #34158 and 34168:				
34169	Plastic nozzle	1	12	6 89133 34169 5

Paint mixer professional quality

Made of metal, powder coated finish, for mixing paint, adhesives, car entrance sealants, waterproofing coatings, etc.



51011

51010

51013

51018

Item#	Description	Box	Carton	UPC code
51010	2-3/8" x 16"	1	24	6 89133 51010 7
51011	2-1/4" x 14"	1	48	6 89133 51011 4
51012	3-1/4" x 16"	1	24	6 89133 51012 1
51013	4-1/2" x 23-1/2"	1	24	6 89133 51013 8
51014	4-3/4" x 30"	1	12	6 89133 51014 5
For high density product:				
51018	8-1/4" x 30"	1	24	6 89133 51018 3

METAL BRUSH

High quality carbon steel

Our wire brushes are designed to provide optimal performance and exceptional durability. Made from high-quality steel, they feature a black oxidized finish that protects them against rust, ensuring a long lifespan. The ergonomic wooden handle provides a comfortable and natural grip, allowing precise control during the most demanding jobs. These brushes are ideal for stripping, deep cleaning and surface preparation.

USE

- Metal:**
 - Removal of rust, paint, and oxidation
 - Weld cleaning
 - Preparation of metal surfaces before painting or applying coatings
- Wood:**
 - Removal of paint, varnish, or stains
 - Preparation of surfaces before applying finishes
 - Creation of textured or aging effects
- Concrete:**
 - Cleaning stubborn residue or paint
 - Preparation of surfaces before treatment or sealing
 - Removal of embedded dirt or moss
- Brick:**
 - Removal of dry mortar or cement
 - Cleaning of surfaces before repointing
- Rock:**
 - Cleaning and stripping natural stone or slabs
 - Preparation of surfaces before finishing or treatment









Item#	Description	Box	Carton	UPC code
71419N	14" x 4 rows, black finish	12	120	6 89133 71419 2
74419N	14" x 4 rows, black finish with scraper	12	120	6 89133 74419 9
71416N	10" x 4 rows, black finish	12	120	6 89133 71416 1
74416N	10" x 4 rows, black finish with scraper	12	120	6 89133 74416 8
71619N	7" x 6 rows, black finish	12	120	6 89133 71619 6



Tool
6 en 1

Stainless steel, molded rubber handle, comfortable and solid.

- Use:
-  Roller cleaner
 -  Gallon opener
 -  Cleans cracks
 -  Extends the compound
 -  Scraper
 -  Pull out the nails

Item#	Description	Box	Carton	UPC code
42170	2-1/2" (63mm)	12	240	6 89133 42170 0



Threaded handle standard

Very good quality sanding block, in manual plastic or metal for extension handle.

Item#	Description	Box	Carton	UPC code
38307	Metal, threaded end: 9-1/4" x 3-1/4"	1	24	6 89133 38307 7
38308	Plastic, with handle: 9-1/4' x 3-1/4'	1	20	6 89133 38308 4

Metal gallon opener, good quality.



Item#	Description	Box	Carton	UPC code
50012	Metal	1	350	6 89133 50012 2



Brush cleaner and/or roller or paint mixer or other low density products. Metal, chrome finish.

Use: Brush
 Roll
 Mixer

Item#	Description	Box	Carton	UPC code
53011	Cleaner	1	36	6 89133 53011 2



Ultra-robust scissor, stainless steel, vinyl-coated handle.

Item#	Description	Box	Carton	UPC code
All-purpose: 10908	8"	12	144	6 89133 10908 0

CHIDACA

#1 in paint accessories

This copy is reserved strictly for use of sales of Chidaca® products.

Any reproduction in part or in whole of this document (including photos and other components) without the written permission of Chidaca® is strictly prohibited.

2025 Edition